

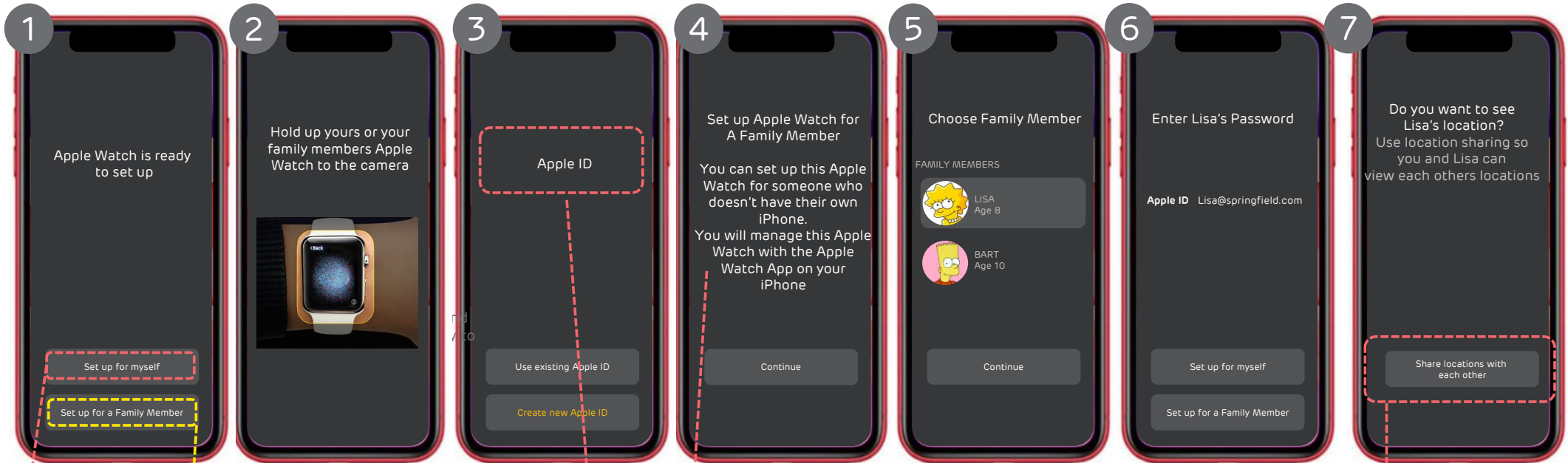
SET UP

APPLE



Apple Watch Set-Up

You can set up your Apple Watch by opening the camera on your iPhone and holding up your Apple watch to the camera



Set-up for a lead watch linked to the phone

Set up for a 'Family Plan' additional watch connection

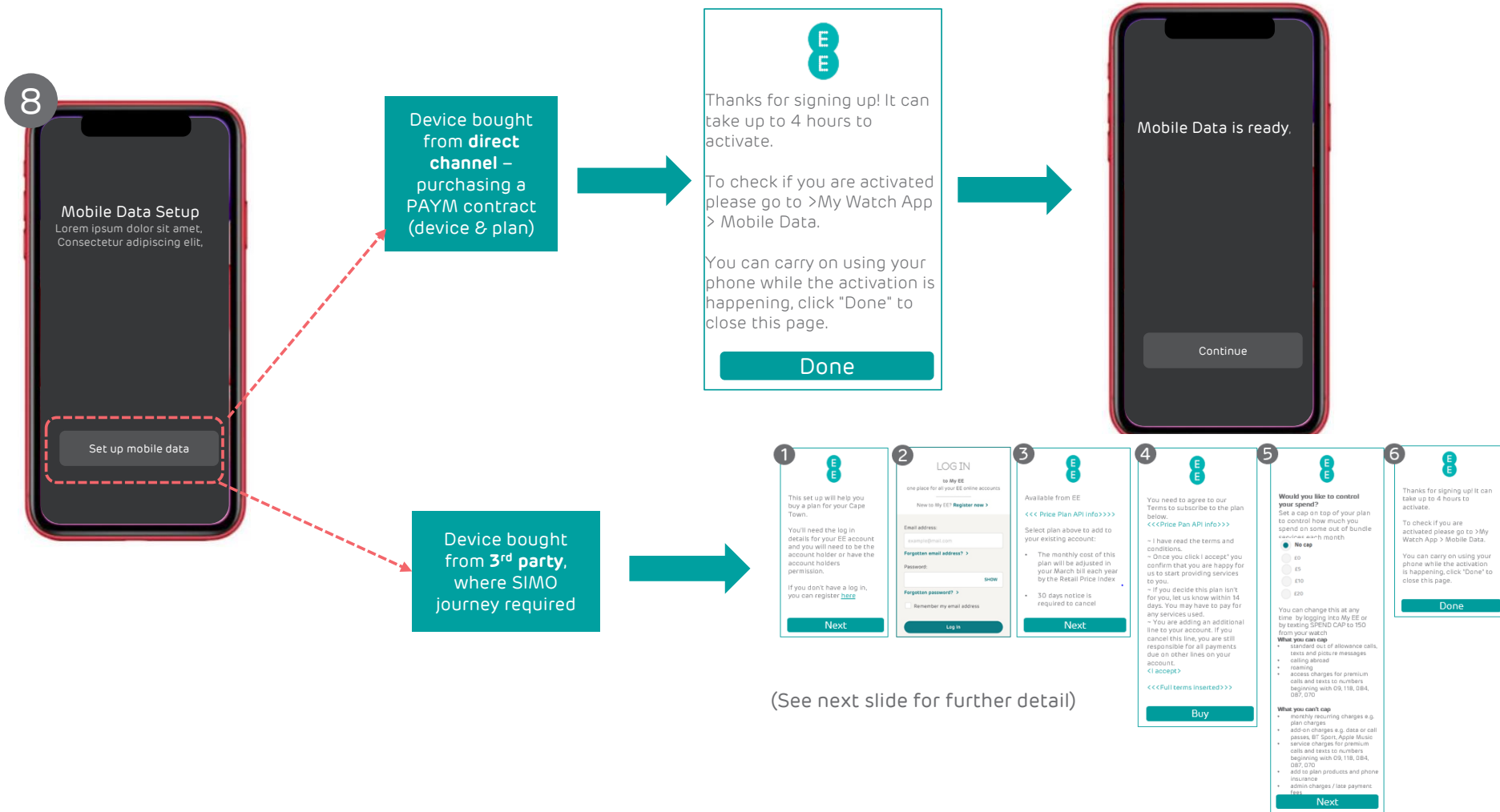
Login or create a new members Apple ID for Apple Family Sharing = can share location, iTunes, App Store purchases etc. For further detail see link - <https://www.apple.com/family-sharing/>

Adding new family member – shows all the family members in the Apple Family iCloud

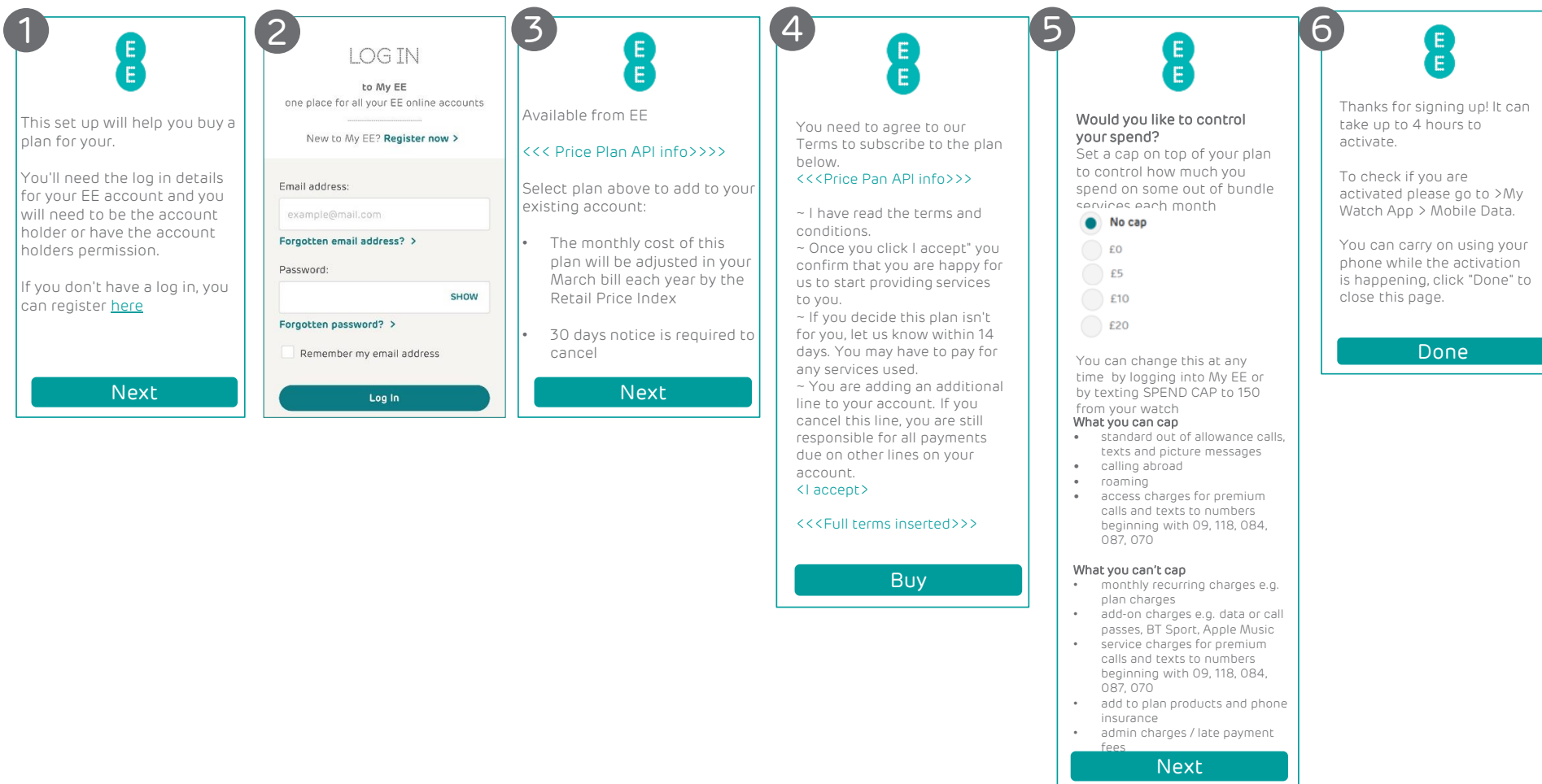
Entering family members credentials

2 way location tracking – view each others locations in Find My Friends and Messages, and help locate devices using Find My iPhone. (this can also be changed later)

There are 2 journeys for setting up Mobile Data: Direct (from EE) or when bought from a 3rd party retailer (e.g. John Lewis, Apple)



Self Serve – purchasing a SIMO plan



Apple Watch FAQs

Can you use any Apple watch with any iPhone?

The Apple Watch requires an iPhone 5s or newer in order to go through the set up process, and an Apple Watch equipped with 4G connectivity will require at least an iPhone 6. Unfortunately, the Watch app is not available for the iPad, so you will definitely need an iPhone in order to properly use the Apple Watch.

Do I need to insert an e-sim

No. The Apple Watch has a built in eSim, which can't be removed. Once you've set up your eSim, you'll be good to go.

Will my Apple Watch use my data?

Apple Watch can connect to cellular data. With a cellular connection, you can make calls and use data or apps when you don't have your iPhone or Wi-Fi.

How much data can I use on my Apple Watch?

Your Apple Watch will use the data allowance you get from your phone plan.

Can I use my Apple Watch plan abroad?

Unfortunately, roaming is not available on the Apple Watch Personal Paired plan. However, you'll still be able to use most of the features if it's connected to your phone via Bluetooth.